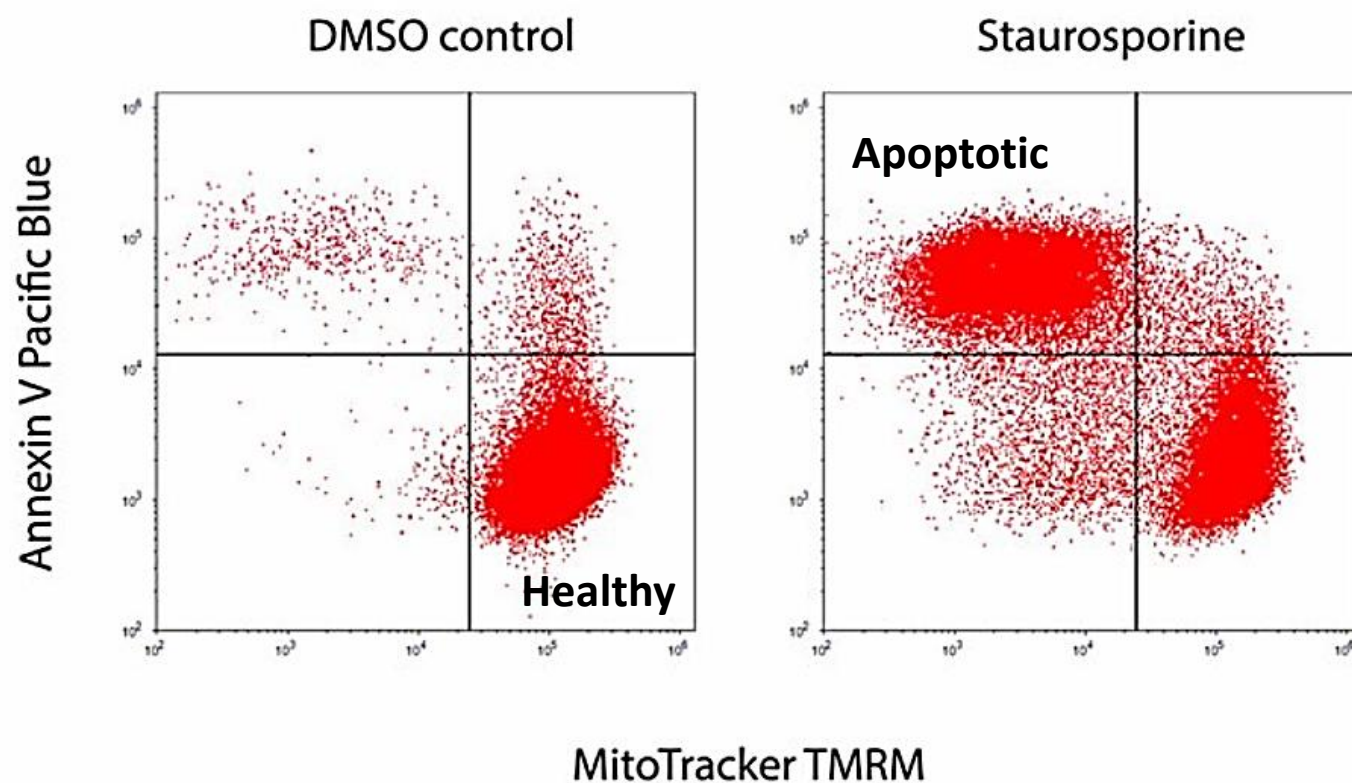


15<sup>th</sup> of April 2019  
BIOCEV practical flow course #2

**CELL DEATH:**  
**apoptosis, necrosis, autophagy**

Flow cytometry is a powerful tool to study different aspects of cell life and death. The study of different ways that a cell dies becomes known as [Cell Necrobiology](#). Today having a huge variability of instruments and reagents available to study Cell Necrobiology it's possible to have a closer look on different stages of cell death.



*Figure 1. One of the apoptosis assays – detection of changes in cell membrane integrity and mitochondrial potential.* Jurkat cells, a human T-lymphocyte cell line, were treated with DMSO (control) or staurosporine. Staining with Annexin V and MitoProbe TMRM allows to detect apoptotic cells.

BIOCEV practical flow course #2 is designed to give you a theoretical overview of the assays available to study cell death as well as practical tips and tricks during the following hands-on sessions on sample preparation, instrument setup, data acquisition and consequent analysis in FlowJo Software.

Deadline for [online registration](#) is 1<sup>st</sup> of April 2019